



Wilber Clatonia Public Schools

# The Wolverine

August 2023

## From the Superintendent-Mr. Collins

Wow! This summer has flown by and the start of the 2023-2024 school year will be here before we know it. There are always “new” people, curriculum and improvements that come with the new year. I would like to take a moment to introduce some new teaching staff for 2023-2024; they include: Paud Bade, Elementary Student Services; Carla Hinkle, Elementary Special Education; Cara Holtorf, Vocational Agriculture; Renee Kettelhut, Secondary Special Education; Kay Meysenburg, Secondary Science, Tucker Platt, Secondary Physical Education; Emily Pruitt, Secondary English; Jadyne Sebek, 1st grade teacher; Larry Vetrovsky, Middle School Math and Science teacher; and Rachel Watson, Secondary Math. We also welcome Joe Ganz to the kitchen staff and as I write this article we still have some paraprofessional positions open. Tony Braithwait will move from a teaching role to that of Special Education Director. Except for some para’s we have a full teaching staff. Hiring teachers seems to be more difficult every year!

The custodial staff has done an excellent job of getting the building ready, making repairs and painting. Their work has been hampered a bit by some larger projects. We replaced carpet in the elementary office, elementary counselor's office and six elementary classrooms. We replaced the basketball standards and backboards in the high school gym. We have two projects still in progress which include replacing lighting that is not already LED with new fixtures or LED bulbs and replacing 33 heat pumps and the ERV unit and digital controls in the elementary building. All of these projects help improve the learning environment in our building.

In June and July the Board of Education reviewed nearly 20 policy changes necessitated by legislative action this spring. It would appear that legislation actions created 24 new mandates for schools or NDE which will eventually be passed on to schools.

In August I will be requesting Federal reimbursement of funds and begin work on the budget which has been made a bit more challenging with the addition of a cap on annual revenue growth.

I am looking forward to the opportunity to welcome back staff and students and to meet parents during open house and the many activities our students are involved in. I continue to be excited about finding the resources to help our students become the best people they can be with Wolverine PRIDE!



## Kindergarten Parent Meeting

The Kindergarten Parent Meeting will be held on Thursday, August 10th at 6:30 p.m. in the elementary commons. The Kindergarten teachers will be leading the parents/guardians through the day to day activities of the Kindergarten students. Mrs. Radcliff will be touching on some of the important pieces in our student handbook, communication, transportation, and safety procedures. We hope to see all parents/guardians of the Kindergarten students on August 10th!

## Preschool Parent Meeting



The Preschool Parent meeting will be held on Tuesday, August 15th at 6:30 p.m. in the elementary commons. The preschool teacher, Ms Jenna will be there to inform our newest parents/guardians of the preschool students on the regulations for the Early Childhood Education Program (Rule 11). Mrs. Radcliff will talk about the communication, attendance and transportation pieces to ensure that all students have a successful experience in the Wilber Clatonia Preschool program. We hope to see all parents/guardians of the preschool students on Tuesday, August 15th!

## Secondary Changes and Reminders

# 6TH GRADE ORIENTATION

Wilber-Clatonia Secondary Staff will be greeting 6th grade students and parents at the 6th grade orientation at 6:00 pm just before the K-12 Open house at 6:30 on Monday, August 14th!

This time is designated for our 6th graders so that they can pick up a copy of their schedule, meet their teachers, “walk” their schedule, locate their locker, and practice opening their locker. 6th grade teachers are looking forward to welcoming our new group of 6th graders to the secondary side of the building. Please plan to attend orientation to help your student transition more smoothly to middle school at Wilber-Clatonia.

The K-12 Open House then begins at 6:30 on Monday, August 14th and runs until 7:30 pm. Copies of student schedules will be available and we will once again hold an Activity and Club Fair to encourage students to get connected and engaged in the variety of clubs, activities, and sports available at WC. Please encourage your student to stop at the booths and sign up to join a club or organization at some point during the open house!

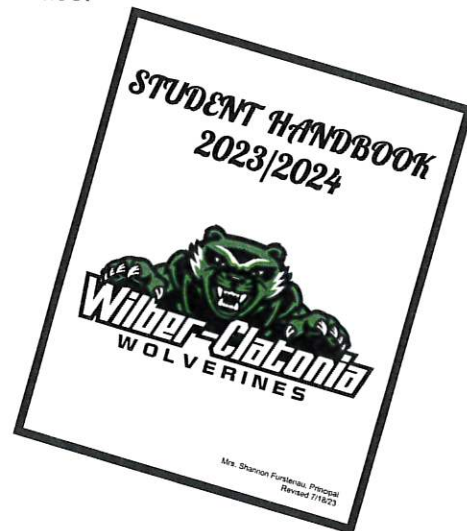


### Breakfast reminder

Breakfast will continue to be served in the morning before school starts from 7:40 am until 7:55 am for all secondary students. Kitchen staff will watch out for any late buses and will make sure those students have the opportunity to get breakfast before heading to class.

### 2023-2024 Student Handbook

The 2023-2024 Student handbook is available on the Website. Please take some time to locate the document under Family Resources, Student Handbooks and Policies.



**Wilber-Clatonia Jr. – Sr. High School  
Bell Schedule 2023-2024**

Regular Dismissal:	Wednesday Dismissal:	1:00 Dismissal:			
8:00-8:47	1 <sup>st</sup> Period	8:00-8:40	1 <sup>st</sup> Period	8:00-8:27	1 <sup>st</sup> Period
8:50-9:37	2 <sup>nd</sup> Period	8:43-9:23	2 <sup>nd</sup> Period	8:30-8:57	2 <sup>nd</sup> Period
9:40-10:27	3 <sup>rd</sup> Period	9:26-10:06	3 <sup>rd</sup> Period	9:00-9:27	3 <sup>rd</sup> Period
10:30-11:17	4 <sup>th</sup> Period	10:09-10:49	4 <sup>th</sup> Period	9:30-9:57	4 <sup>th</sup> Period
1 <sup>st</sup> Lunch		10:52-11:32	7 <sup>th</sup> Period	10:00-10:27	7 <sup>th</sup> Period
11:20 – 11:50	Lunch	1 <sup>st</sup> Lunch		10:30-10:57	Advisory
11:53 – 12:40	Period 5B	11:35-12:05	Lunch	1 <sup>st</sup> Lunch	
12:43-1:30	Period 6B	12:08-12:48	Period 5B	11:00-11:30	Lunch
2 <sup>nd</sup> Lunch		12:51-1:31	Period 6B	11:33-12:00	Period 5B
11:20-12:07	Period 5A	2 <sup>nd</sup> Lunch		12:03-12:30	Period 6B
12:10-12:40	Lunch	11:35-12:15	Period 5A	2 <sup>nd</sup> Lunch	
12:43-1:30	Period 6B	12:18-12:48	Lunch	11:00-11:27	Period 5A
3 <sup>rd</sup> Lunch		12:51-1:31	Period 6B	11:30-12:00	Lunch
11:20-12:07	Period 5A	3 <sup>rd</sup> Lunch		12:03-12:30	Period 6B
12:10-12:40	Period 6A	11:35-12:15	Period 5A	3 <sup>rd</sup> Lunch	
12:40-1:10	Lunch	12:18-12:48	Period 6A	11:00-11:27	Period 5A
1:13-1:30	Period 6A	12:48-1:18	Lunch	11:30-11:57	Period 6A
1:33-2:20	Period 7	1:21-1:31	Period 6A	12:00-12:30	Lunch
2:23-2:45	Advisory	1:34-1:57	Advisory	12:33-1:00	8 <sup>th</sup> Period
2:48-3:35	8 <sup>th</sup> Period	2:00-2:40	Period 8		

Bell Schedule Change

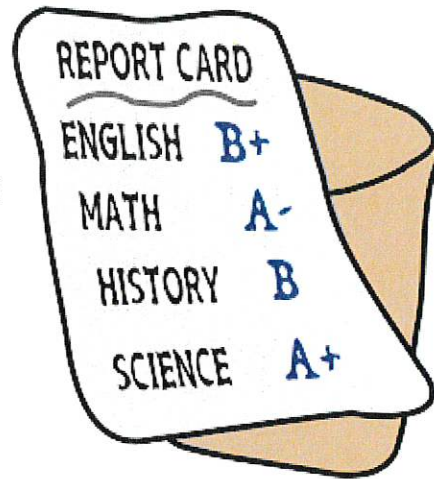
In the past, students and staff have taken lunch during 5th period classes and in the last couple of years we have had three lunch periods to ensure that everyone can get through the lunch line in 30 minutes. To accommodate 3 lunch periods, 5th period has been an hour long. This year we adjusted our schedule to make sure that each class period is the same length. In order to get three lunch periods in, 1st and 2nd lunch will eat before or after 5th period and 3rd lunch will eat during 6th period. This new schedule will take some getting used to but it does ensure that all class periods are equal in length.

The second schedule change is that Advisory has been moved to the afternoon and will be in between 7th and 8th period. This change was made so that students could use it as a study hall to complete work from earlier in the day. We will also continue to use this time as an intervention for students on the credit list. Students on the credit list will be assigned to the content teacher they are on the list for so that they can use the time to get the help they need to improve their grade.

Grading Changes

A committee of secondary teachers meet numerous times last year to talk about grading at Wilber-Clatonia. The team quickly realized that no common practices or policies existed and they began to work to create some common policies and practices. The full policy can be found in the Secondary Student Handbook on the website. Below are several of the highlights:

- Student grades should reflect what a student knows and can do in relation to the standard being taught.
- Assignments will be categorized as either formative or summative. Formative assignments are daily work while summative assignments are end of the unit tests/projects etc.
- Formative assignments will count for 35% of a student's grade and summative assignments will count for 65% of a student's grade.
- Since all courses are semester long, grades for all courses will be a running grade that continues to update throughout the semester.
- Quarter and mid-quarter grades will be a snapshot of the semester grade at those specific points in time.
- At the start of each semester, the first credit check will take place on the Monday of the third week of classes. From that point forward, credit reports will be run each Monday morning to determine eligibility. Students get one week of grace each semester to improve their grades before they become ineligible. A student is ineligible if they are failing more than one class at the time the credit report was run.
- Parents are encouraged to login to PowerSchool frequently to check the status of their student's grade. The PowerSchool login is found on the Wilber-Clatonia website.



## 5th Grade Band Night



Fifth Grade Band Night will be held on Thursday, September 7th in the elementary commons. Time to be determined.



## School Pictures

School Pictures will be on Thursday, September 7th.

## Meal Prices

### **Breakfast Prices:**

K-12 Student Breakfast:	\$2.10
Adult Breakfast:	\$2.75

### **Lunch Prices:**

K-5 Student Lunch	\$3.15
6-12 Student Lunch	\$3.25
Adult Lunch	\$4.60

Free and Reduced Applications are available on our website, or on Final Forms.

E-Funds for Schools is our online payment system. Please sign up on <https://payments.efundsforschools.com/v3/districts/56619/>

# High School Counseling News

August 2023

Jill Shea-Carpenter  
 jill.shea@wilberclatonia.org  
 402-821-2508, ext. 309

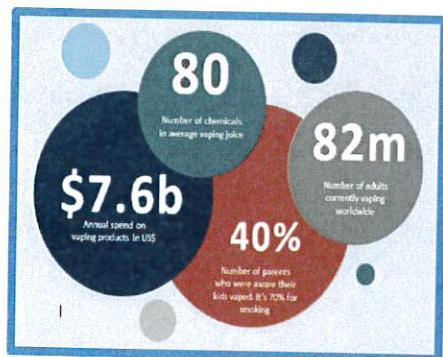


## Ms. Shea-Carpenter's BACK TO SCHOOL Hours

Tuesday, August 1<sup>st</sup>: 9:00 am — 3:00 pm  
 Wednesday, August 2<sup>nd</sup>: 9:00 am — 3:00 pm  
 Thursday, August 3<sup>rd</sup>: 9:00 am — 1:00 pm  
 Monday, August 7<sup>th</sup>: 10:00 am — 3:00 pm  
 Tuesday, August 8<sup>th</sup>: 9:00 am — 3:00 pm  
 Wednesday, August 9<sup>th</sup>: 10:00 am — 2:00 pm



Teacher workdays are Thursday, August 10<sup>th</sup>; Friday, August 11<sup>th</sup>; & Monday, August 14<sup>th</sup>. I will be in the building but will not have much time to work with students due to meetings and trainings.



## Say NO to VAPING! Current vaping statistics.

### How Does Vaping Affect Your Health?

Vaping can cause:

- Lung disease
- Acute lung injury
- COPD
- EVALI
- Brain damage
- Seizures
- Acute nicotine poisoning
- Cardiovascular disease
- Heart attack
- Stroke



## 2023-2024 ACT Test Dates:



Test Date	Registration Deadline	Late Fee required
Sat, Sept 9, 2023	Fri, Aug 4, 2023	Sept 1, 2023
Sat, Oct 28, 2023	Fri, Sept 22, 2023	Sept 30, 2023
Sat, Dec 10, 2023	Fri, Nov 4, 2023	Oct 6, 2023
Sat, Feb 10, 2024	Fri, Jan 5, 2024	Feb 2, 2024
Sat, Apr 13, 2024	Fri, Mar 8, 2024	Apr 5, 2024
Sat, June 8, 2024	Fri, May 3, 2024	May 31, 2024
Sat, July 13, 2024	Fri, June 21, 2024	July 5, 2024
<b>Fee: \$66.00</b>  <b>Test option change: \$25.00</b>	<b>Fee w/writing: \$91.00</b>  <b>Additional Score reports: \$18.00</b>	<b>Late fee: \$36.00</b>  <b>Test Date Change: \$42.00</b>

### Achieving Goals

Many students think about the possibility of earning scholarships for academics, athletics, or other extracurricular activities, yet do not think about the hard work and effort that needs to be part of the process.

The chart on the right shares the probability of becoming an NCAA participant. Nothing in life is handed to anyone; we all need to work to be our best selves in all aspects of our lives.

If you are the student-athlete who thinks just going to practice and putting in just enough effort to be able to play and then expects to earn a scholarship, think again. The odds are against you. Always strive to go above and beyond.

The same goes for academics; you can make A's by putting in minimal effort and not learning time management and putting in the effort to learn rather than to just get the grade, then you will not be as prepared for life. Learning is the goal, not the grade.

You should always push yourself to be your best in all aspects of life. Are you working hard to achieve your goals?



Estimated Probability of Competing in College Athletics

	High School Participants	NCAA Participants	Overall % HS to NCAA	% HS to NCAA Division I	% HS to NCAA Division II	% HS to NCAA Division III
<b>Men</b>						
Baseball	482,740	36,011	7.5%	2.2%	2.3%	2.9%
Basketball	540,769	18,816	3.5%	1.0%	1.0%	1.4%
Cross Country	269,295	14,303	5.3%	1.8%	1.4%	2.1%
Football	1,006,013	73,712	7.3%	2.9%	1.9%	2.5%
Golf	143,200	8,485	5.9%	2.0%	1.6%	2.2%
Ice Hockey	35,283	4,323	12.3%	4.8%	0.6%	6.8%
Lacrosse	113,702	14,603	12.8%	3.1%	2.5%	7.3%
Soccer	459,077	25,499	5.6%	1.3%	1.5%	2.7%
Swimming	136,638	9,799	7.2%	2.8%	1.2%	3.2%
Tennis	159,314	7,785	4.9%	1.6%	1.0%	2.3%
Track & Field	605,354	28,914	4.8%	1.9%	1.2%	1.7%
Volleyball	63,563	2,355	3.7%	0.7%	0.7%	2.3%
Water Polo	22,475	1,072	4.8%	2.7%	0.8%	1.3%
Wrestling	247,441	7,300	3.0%	1.0%	0.8%	1.2%
<b>Women</b>						
Basketball	399,067	16,509	4.1%	1.3%	1.2%	1.7%
Cross Country	219,345	15,624	7.1%	2.7%	1.7%	2.7%
Field Hockey	60,824	6,119	10.1%	2.9%	1.4%	5.8%
Golf	79,821	5,436	6.8%	2.8%	1.9%	2.1%
Ice Hockey	9,650	2,531	26.2%	8.9%	1.1%	16.2%
Lacrosse	99,750	12,452	12.5%	3.7%	2.6%	6.2%
Soccer	394,105	28,310	7.2%	2.4%	1.9%	2.9%
Softball	362,038	20,419	5.6%	1.8%	1.7%	2.2%
Swimming	173,088	12,980	7.5%	3.3%	1.2%	3.0%
Tennis	189,436	8,596	4.5%	1.5%	1.0%	2.0%
Track & Field	488,267	30,326	6.2%	2.8%	1.5%	1.9%
Volleyball	452,808	17,780	3.9%	1.2%	1.1%	1.6%
Water Polo	21,735	1,217	5.6%	3.3%	1.1%	1.2%

Sources: High school figures from the [2018-19 High School Athletics Participation Survey](#) conducted by the National Federation of State High School Associations; data from [club teams](#) not included. College numbers from the NCAA [2018-19 Sports Sponsorship and Participation Rates Report](#).

Last Updated: April 8, 2020

# 18



## Things High Achievers Do That Low Achievers Don't

- 1. They move on.** They don't waste time feeling sorry for themselves.
- 2. They keep control.** They don't give away their power.
- 3. They embrace change.** They welcome challenges.
- 4. They stay happy.** They don't complain. They don't waste energy on things they can't control.
- 5. They are kind,** fair, and unafraid to speak up. They don't worry about pleasing other people.
- 6. They are willing to take calculated risks.** They weigh the risks and benefits before taking action.
- 7. They invest their energy in the present.** They don't dwell on the past.
- 8. They accept full responsibility for their past behavior.** They don't make the same mistake over and over.
- 9. They celebrate other people's success.** They don't resent that success.
- 10. They are willing to fail.** They don't give up after failing. They see every failure as a chance to improve.
- 11. They enjoy their time alone.** They don't fear being alone.
- 12. They are prepared to work and succeed on their own merits.** They don't feel the world owes them anything.
- 13. They have staying power.** They don't expect immediate results.
- 14. They evaluate their core beliefs** — and modify as needed.
- 15. They expend their mental energy wisely.** They don't spend time on unproductive thoughts.
- 16. They think productively.** They replace negative thoughts with productive thoughts.
- 17. They tolerate discomfort.** They accept their feelings without being controlled by them.
- 18. They reflect on their progress** every day. They take time to consider what they've achieved and where they are going.



BookMarketingBestsellers.com

We only get one life.  
Are you being present?

Putting my phone down  
and picking my life up.

How do you  
react?  
We are the  
only ones  
responsible  
for ourselves.

Accept  
responsibility for  
your life.  
Know that it is you who  
will get you where you  
want to go, no one else.

Always choose kind.

Above all,  
be kind.

# One Act Tryouts

One Act Play Tryouts will be held on August 21st at 3:45 p.m. See you there!



*Change your thoughts and  
you will change your world. ~  
Norman Vincent Peale~*

# Offer Versus Serve in the National School Lunch and Breakfast Programs

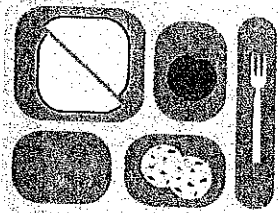
Offer Versus Serve (OVS) is a serving option that applies to menu planning and the determination of reimbursable school meals in the U.S. Department of Agriculture's (USDA) National School Breakfast (SBP) and Lunch Programs (NSLP). OVS cannot be utilized in the Afterschool Snack Program.

The USDA meal patterns include five food components: Meat/Meat Alternate, Grains, Fruits, Vegetables and Milk. OVS allows students to decline a certain number of food components in the meal, reducing food waste and food costs and allowing students to select the foods they prefer to eat. OVS must be implemented in senior high schools for lunch. OVS is optional for junior high, middle schools and elementary schools.

## OVS Requirements for Lunch:

For a lunch to be reimbursable under OVS, schools must meet the following criteria:

- All **five food components** (meat/meat alternate, grains, fruits, vegetables and low-fat (1%) or fat-free milk) must be offered to all students.
- Serving sizes for all food components must equal the required quantity for the different grade groups in the NSLP meal pattern.
- Meals must be priced as a unit, i.e., students pay the same price regardless of whether they take three, four or five food components.
- Students decide which foods to decline, if any. Students must be allowed to decline up to two food components.
- All students must take **at least three** of the five food components offered, including **at least a 1/2 cup serving of fruit or vegetable and full servings** of the other selected food components. Students may take smaller portions of the declined food components; however, they do not count towards a reimbursable meal.
- When the meat/meat alternate is provided in two menu items (such as a Cheese Stick and Yogurt), the student must take at least the minimum daily serving size depending on the grade group. For grades K-5 and 6-8: 1 oz.; for grades 9-12 grades: 2 oz.
- When the meal includes multiple grain items and the student selects more than one (e.g., 1/2 cup of pasta and a one-ounce roll), only one grain counts as a reimbursable component toward the OVS requirements.



A **food component** is one of the five food groups that comprise a reimbursable meal; including meat/meat alternate, grains, fruits, vegetables and milk.

A **food item** is a specific food offered within the five food components.

The chart below summarizes the meal pattern requirements and the number of food components that students can decline.

Must offer Five Components <sup>1</sup>	Student May Decline
<ul style="list-style-type: none"> <li>• One serving of meat/meat alternate</li> <li>• One serving of grains</li> <li>• One serving of fruits</li> <li>• One serving of vegetables</li> <li>• One serving of low-fat (1%) unflavored milk or fat-free flavored or unflavored milk</li> </ul>	<ul style="list-style-type: none"> <li>• Up to two food components; however, must take 1/2 cup serving of fruit, vegetable or a combination of the two</li> </ul>

<sup>1</sup>Serving sizes must equal the required quantities for each grade group specified in the NSLP meal pattern.

### OVS Requirements for Breakfast – Effective School Year 2014-15

OVS is not required at breakfast but encouraged in order to reduce plate waste. For purposes of OVS, a school must offer at least four food items that meet the required food components. Under OVS, students must select three food items, including at least 1/2 cup of fruit. If OVS is not implemented, students must leave the serving line with all food items. For a breakfast to be reimbursable under OVS, schools must meet the following criteria:

- The meal must be planned to include the three required components: grains, fruits and milk.
- For all grade groups:
  - Schools must offer at least a 1 ounce equivalent (oz. eq.) of grains daily.
  - Schools may offer meat/meat alternate in place of part of the grain component after the minimum daily grain requirement is met.
  - Schools must offer 1 cup of fruit, 100% juice or vegetable daily. No more than half of the fruit or vegetable offerings during the week may be in the form of juice.
  - Vegetables may be substituted for fruits, but the first two cups of vegetable per week must be from the dark green, red/orange, beans and peas (legumes) or other vegetable subgroups.
  - Students are required to take 1/2 cup of fruit.
- Serving sizes for all food components must equal the required quantity for the different grade groups in the SBP meal pattern.
- Meals must be priced as a unit, i.e., students pay the same price regardless of whether they take three or four items.
- Students may decline any one food item.
- Students must take full servings of **at least three** of the four food items offered. Students may take a smaller portion of the declined food item; however, it does not count towards a reimbursable meal.

Must offer Four Food Items <sup>1</sup>	Student May Decline
<ul style="list-style-type: none"> <li>• Two oz. eq. of Grains (can be the same food item) OR</li> <li>• One oz. eq. of Grain and substitute a one oz. eq. of Meat/Meat Alternate for a Grain</li> <li>• One serving of Fruit, Vegetable or 100 percent Juice</li> <li>• One serving of low-fat (1%) unflavored milk or fat-free flavored or unflavored milk</li> </ul>	<ul style="list-style-type: none"> <li>• One food item; however, must take 1/2 cup serving of fruit</li> </ul>

<sup>1</sup>Serving sizes must equal the required quantities for each grade group specified in the SBP meal pattern.

**Wilber Clatonia Public Schools****July 1, 2023**

Dear Parent/Guardian:

Children need healthy meals to learn Wilber Clatonia Public School offers healthy meals every school day. Breakfast costs \$ 2.10 K-12; lunch costs \$3.15 K-5; \$3.35 6-12 Lunch. **Your children may qualify for free or reduced price meals.** Reduced price is \$.30 for breakfast and \$.40 for lunch. If your child(ren) qualified for free or reduced price meals at the end of last school year, you must submit a new application by **[30<sup>th</sup> operating day]** in order to avoid an interruption in meal benefits.

This packet includes an application for free or reduced price meal benefits and a set of detailed instructions. Below are some common questions and answers to help you with the application process.

1. WHO CAN GET FREE OR REDUCED PRICE MEALS?
  - All children in households receiving benefits from the Supplemental Nutrition Assistance Program (SNAP), Temporary Assistance for Needy Families (TANF) or the Food Distribution Program on Indian Reservations (FDPIR) are eligible for free meals.
  - Foster children that are under the legal responsibility of a foster care agency or court are eligible for free meals.
  - Children participating in their school's Head Start program are eligible for free meals.
  - Children who meet the definition of homeless, runaway, or migrant are eligible for free meals.
  - Children may receive free or reduced price meals if your household's income is within the limits on the Federal Income Eligibility Guidelines. Your children may qualify for free or reduced price meals if your household income falls at or below the limits on this chart.
2. HOW DO I KNOW IF MY CHILDREN QUALIFY AS HOMELESS, MIGRANT, OR RUNAWAY? Do the members of your household lack a permanent address? Are you staying together in a shelter, hotel, or other temporary housing arrangement? Does your family relocate on a seasonal basis? Are any children living with you who have chosen to leave their prior family or household? If you believe children in your household meet these descriptions and haven't been told your children will get free meals, please call or e-mail **Josh Arias, [jarias@esu7.org](mailto:jarias@esu7.org); 402-910-1960.**
3. DO I NEED TO FILL OUT AN APPLICATION FOR EACH CHILD? No. *Use one Free and Reduced Price School Meals Application for all students in your household.* We cannot approve an application that is not complete, so be sure to fill out all required information. Return the completed application to: **Connie Hasenohr, PO Box 487, Wilber, NE 68465; 402-821-2266; [connie.hasenohr@wilberclatonia.org](mailto:connie.hasenohr@wilberclatonia.org)**
4. SHOULD I FILL OUT AN APPLICATION IF I RECEIVED A LETTER THIS SCHOOL YEAR SAYING MY CHILDREN ARE ALREADY APPROVED FOR FREE MEALS? No, but please read the letter you got carefully and follow the instructions. If any children in your household were missing from your eligibility notification, contact **Connie Hasenohr, PO Box 487, Wilber, NE 68465; 402-821-2266; [connie.hasenohr@wilberclatonia.org](mailto:connie.hasenohr@wilberclatonia.org)** immediately.
5. CAN I APPLY ONLINE? You are encouraged to complete an online application instead of a paper application if your school district makes this option available. The online application has the same requirements and will ask you for the same information as the paper application. Visit **[www.wilberclatonia.org](http://www.wilberclatonia.org)** to begin or to learn more about the online application process. Contact **Connie**

**Hasenohr, PO Box 487, Wilber, NE 68465; 402-821-2266;**

**[connie.hasenohr@wilberclatonia.org](mailto:connie.hasenohr@wilberclatonia.org)**. if you have any questions about the online application.

6. MY CHILD'S APPLICATION WAS APPROVED LAST YEAR. DO I NEED TO FILL OUT A NEW ONE? Yes. Your child's application is only good for that school year and for the first few days of this school year. You must send in a new application unless the school told you that your child is eligible for the new school year. If you do not send in a new application that is approved by the school or you have not been notified that your child is eligible for free meals, your child will be charged the full price for meals.
7. I GET WIC. CAN MY CHILDREN GET FREE MEALS? Children in households participating in WIC may be eligible for free or reduced price meals. Please send in an application.
8. WILL THE INFORMATION I GIVE BE CHECKED? Yes. We may also ask you to send written proof of the household income you report.
9. IF I DON'T QUALIFY NOW, MAY I APPLY LATER? Yes, you may apply at any time during the school year. For example, children with a parent or guardian who becomes unemployed may become eligible for free and reduced price meals if the household income drops below the income limit.
10. WHAT IF I DISAGREE WITH THE SCHOOL'S DECISION ABOUT MY APPLICATION? You should talk to school officials. You also may ask for a hearing by calling or writing to: **Ray Collins, PO Box 487, Wilber, NE 68465; 402-821-2266; [ray.collins@wilberclatonia.org](mailto:ray.collins@wilberclatonia.org)**
11. MAY I APPLY IF SOMEONE IN MY HOUSEHOLD IS NOT A U.S. CITIZEN? Yes. You, your children, or other household members do not have to be U.S. citizens to apply for free or reduced price meals.
12. WHAT IF MY INCOME IS NOT ALWAYS THE SAME? List the amount that you normally receive. For example, if you normally make \$1000 each month, but you missed some work last month and only made \$900, put down that you made \$1000 per month. If you normally get overtime, include it, but do not include it if you only work overtime sometimes. If you have lost a job or had your hours or wages reduced, use your current income.
13. WHAT IF SOME HOUSEHOLD MEMBERS HAVE NO INCOME TO REPORT? Household members may not receive some types of income we ask you to report on the application, or may not receive income at all. Whenever this happens, please write a 0 in the field. However, if any income fields are left empty or blank, those will also be counted as zeroes. Please be careful when leaving income fields blank, as we will assume you meant to do so.
14. WE ARE IN THE MILITARY. DO WE REPORT OUR INCOME DIFFERENTLY? Your basic pay and cash bonuses must be reported as income. If you get any cash value allowances for off-base housing, food, or clothing, it must also be included as income. However, if your housing is part of the Military Housing Privatization Initiative, do not include your housing allowance as income. Any additional combat pay resulting from deployment is also excluded from income.
15. WHAT IF THERE ISN'T ENOUGH SPACE ON THE APPLICATION FOR MY FAMILY? List any additional household members on a separate piece of paper, and attach it to your application. Contact **Connie Hasenohr, PO Box 487, Wilber, NE 68465; 402-821-2266; [connie.hasenohr@wilberclatonia.org](mailto:connie.hasenohr@wilberclatonia.org)** to receive a second application.
16. MY FAMILY NEEDS MORE HELP. ARE THERE OTHER PROGRAMS WE MIGHT APPLY FOR? To find out how to apply for SNAP or other assistance benefits, please go online to [ACCESSNebraska.ne.gov](http://ACCESSNebraska.ne.gov) or call 1-800-383-4278.

If you have other questions or need help, call **402-821-2266**.

Sincerely,

**Connie Hasenohr**

## Instructions for Completing the Free & Reduced Price School Meals Family Application

**For households receiving benefits from the Supplemental Nutrition Assistance Program (SNAP), Temporary Assistance for Needy Families (TANF) or the Food Distribution Program on Indian Reservations (FDPIR), follow these instructions:**

- Part 1:** List each child's name, the school they attend and their grade.  
**Part 2:** Enter household's Master Case Number if the household qualifies for SNAP, TANF or FDPIR.  
**Part 3:** Skip this part.  
**Part 4:** Complete this part. An adult must sign the form.  
**Part 5:** This part is optional and does not affect your children's eligibility for free or reduced price meals. If you do not select race or ethnicity, one may be selected based on visual observation.

**For households with FOSTER, HOMELESS, MIGRANT or RUNAWAY CHILDREN, follow these instructions:**

**If all children in the household are foster children:**

- Part 1:** List all foster children, the school they attend and their grade. Check the box indicating the child is a foster child.  
**Part 2:** Skip this part.  
**Part 3:** Skip this part.  
**Part 4:** Complete this part. An adult must sign the form.  
**Part 5:** This part is optional and does not affect your children's eligibility for free or reduced price meals. If you do not select race or ethnicity, one may be selected based on visual observation.

**If some of the children in the household are foster children or are homeless, migrant or runaway children:**

- Part 1:** List all children, the school they attend and their grade. Check the appropriate box.  
**Part 2:** If the household does not have a Master Case Number, skip this part.  
**Part 3:** Follow these instructions to report total household income from last month.  
**Column 1 – Household Members:** List the first and last name of **each** person living in your household, related or not (such as grandparents, other relatives or friends) who share income and expenses. Attach another sheet of paper if necessary.  
**Column 2 - Gross Income and How Often it was Received:** Gross income is the amount earned **before taxes and other deductions**; it is not your take-home pay. For each household member, list each type of income received for the month. You must also report how often the money is received – weekly, every other week, twice a month, or monthly.

**Earnings from Work** includes the following:

- Salary, wages, cash bonuses
- Net income from self-employment (farm or business)

If you are in the U.S. Military, include:

- Basic pay and cash bonuses (do not include combat pay, Family Subsistence Supplemental Allowance (FSSA) payments or privatized housing allowances)
- Allowances for off-base housing, food and clothing

**Do not include income** from SNAP, FDPIR, WIC, Federal education benefits and foster care payments.

**Public Assistance/Child Support/Alimony** includes the following:

- Unemployment benefits, Worker's compensation
- Supplemental Security Income (SSI), Cash assistance from state or local government
- Veteran's benefits (VA benefits), Strike benefits
- Child support payments, Alimony payments

**Pensions/Retirement/All Other Income** includes the following:

- Social Security payments (including railroad retirement and black lung benefits)
- Private pensions or Disability benefits
- Regular income from trusts or estates, Annuities, Investment income, Earned interest, Rental income and *Regular* cash payments received from outside the household.

If you have no income, write "0" or leave the income field blank. By doing this, you are certifying there is no income to

report.

**Household Size:** Enter the total number of people in your household.

**Social Security Number:** The adult signing the form must list the last four digits of their Social Security Number (SSN) or check the box to the right labeled "Check if no SSN."

**Part 4:** Complete this part. An adult must sign the form.

**Part 5:** This part is optional and does not affect your children's eligibility for free or reduced price meals. If you do not select race or ethnicity, one may be selected based on visual observation.

**Please note:** Children who meet the definition of homeless, migrant or runaway, are eligible for free meals. However, the school district must have documentation on file from a migrant coordinator, homeless/runaway liaison or the district's Direct Certification list to approve the child for free meals.

**For ALL other households, follow these instructions:**

**Part 1:** List all children, the school they attend and their grade.

**Part 2:** If the household does not have a Master Case Number, skip this part.

**Part 3:** Follow these instructions to report total household income from last month.

**Column 1 – Household Members:** List the first and last name of **each** person living in your household, related or not (such as grandparents, other relatives or friends) who share income and expenses. Attach another sheet of paper if necessary.

**Column 2 - Gross Income and How Often it was Received:** Gross income is the amount earned **before taxes and other deductions**; it is not your take-home pay. For each household member, list each type of income received for the month. You must also report how often the money is received – weekly, every other week, twice a month, or monthly.

**Earnings from Work** includes the following:

- Salary, wages, cash bonuses
- Net income from self-employment (farm or business)

If you are in the U.S. Military, include:

- Basic pay and cash bonuses (do not include combat pay, Family Subsistence Supplemental Allowance (FSSA) payments or privatized housing allowances)
- Allowances for off-base housing, food and clothing

**Do not include income** from SNAP, FDPIR, WIC, Federal education benefits and foster care payments.

**Public Assistance/Child Support/Alimony** includes the following:

- Unemployment benefits, Worker's compensation
- Supplemental Security Income (SSI), Cash assistance from state or local government
- Veteran's benefits (VA benefits), Strike benefits
- Child support payments, Alimony payments

**Pensions/Retirement/All Other Income** includes the following:

- Social Security payments (including railroad retirement and black lung benefits)
- Private pensions or Disability benefits
- Regular income from trusts or estates, Annuities, Investment income, Earned interest, Rental income and *Regular* cash payments received from outside the household.

If you have no income, write "0" or leave the income field blank. By doing this, you are certifying there is no income to report.

**Household Size:** Enter the total number of people in your household.

**Social Security Number:** The adult signing the form must list the last four digits of their Social Security Number (SSN) or check the box to the right labeled "Check if no SSN."

**Part 4:** Complete this part. An adult must sign the form.

**Part 5:** This part is optional and does not affect your children's eligibility for free or reduced price meals. If you do not select race or ethnicity, one may be selected based on visual observation.

## Escuelas públicas de Wilber Clatonia

1 de julio de 2023

Estimado padre/madre/tutor:

Los niños necesitan comer saludablemente para aprender. Escuelas públicas de Wilber Clatonia ofrece comidas saludables todos los días escolares. El costo del desayuno es de **\$2.10 K-12**; el costo del almuerzo es de **\$3.15 K-5; \$3.35 6-12**. **Es posible que sus hijos califiquen para aprovechar comidas gratuitas o a un precio reducido.** El precio reducido del desayuno es de **\$ .30** y el del almuerzo es de **\$ .40**. Si sus hijos califican para aprovechar comidas gratuitas o a un precio reducido al final del último año escolar, usted debe presentar una nueva solicitud antes del **Septiembre 22, 2023** para evitar la interrupción de los beneficios de comidas.

Este paquete incluye una solicitud de beneficios de comidas gratuitas o a un precio reducido y una serie de instrucciones detalladas. A continuación, se presentan algunas preguntas y respuestas comunes que le ayudarán con el proceso de solicitud.

1. ¿QUIÉN PUEDE CONSEGUIR COMIDAS GRATUITAS O A UN PRECIO REDUCIDO?
  - Todos los niños que vivan en hogares que reciban beneficios del Programa de Asistencia Nutricional Suplementaria (Supplemental Nutrition Assistance Program, SNAP), del Programa de Asistencia Temporal para Familias Necesitadas (Temporary Assistance for Needy Families, TANF) o del Programa de Distribución de Alimentos en Reservaciones Indígenas (Food Distribution Program on Indian Reservations, FDIPIR) son elegibles para recibir comidas gratuitas.
  - Los niños en custodia que se encuentran bajo la responsabilidad legal de una agencia de acogida o de un tribunal son elegibles para recibir comidas gratuitas.
  - Los niños que participen en el programa Head Start de su escuela son elegibles para recibir comidas gratuitas.
  - Los niños que cumplan con la definición de desamparados, fugitivos o inmigrantes son elegibles para recibir comidas gratuitas.
  - Es posible que los niños reciban comidas gratuitas o a un precio reducido si el ingreso familiar se encuentra dentro de los límites establecidos en las pautas federales de cumplimiento de requisitos de ingresos (Federal Income Eligibility Guidelines). Es posible que sus hijos califiquen para recibir comidas gratuitas o a un precio reducido si su ingreso familiar se encuentra en el límite o debajo de los límites que se detallan en dicho cuadro.
2. ¿CÓMO SÉ SI MI HIJO CALIFICA COMO DESAMPARADO, INMIGRANTE O FUGITIVO? ¿Los miembros de su hogar no tienen una dirección permanente? ¿Se alojan en un refugio, hotel u otro tipo de alojamiento transitorio? ¿Su familia se traslada dependiendo de la temporada? ¿Viven niños con usted que han elegido dejar sus familias u hogares anteriores? Si considera que los niños de su familia cumplen con estas descripciones y no le han informado que recibirán comidas gratuitas, llame o envíe un correo electrónico a **Josh Arias, [jarias@esu7.org](mailto:jarias@esu7.org); 402-910-1960**.
3. ¿DEBO COMPLETAR UNA SOLICITUD POR CADA NIÑO? No. *Utilice una Solicitud de comidas escolares gratuitas o a precio reducido para todos los estudiantes de su familia.* No podemos aprobar una solicitud que no esté completa. Por ello, asegúrese de completar toda la información solicitada. Envíe la solicitud completa a la siguiente dirección: **Connie Hasenohr, PO Box 487, Wilber, NE 68465; 402-821-2266; [connie.hasenohr@wilberclatonia.org](mailto:connie.hasenohr@wilberclatonia.org)**
4. ¿DEBO COMPLETAR UNA SOLICITUD SI RECIBÍ UNA CARTA ESTE AÑO ESCOLAR EN LA QUE DECÍA QUE MIS HIJOS YA FUERON APROBADOS PARA RECIBIR COMIDAS GRATUITAS? No, pero lea la carta que recibió atentamente y siga las instrucciones. Si en la notificación de elegibilidad falta algún niño de su familia, comuníquese con **Connie Hasenohr, PO Box 487, Wilber, NE 68465; 402-821-2266; [connie.hasenohr@wilberclatonia.org](mailto:connie.hasenohr@wilberclatonia.org)** de inmediato.

5. ¿PUEDO REALIZAR LA SOLICITUD POR INTERNET? Le alentamos a que complete la solicitud en línea en lugar de hacerlo por escrito si su distrito escolar cuenta con esta opción disponible. La solicitud en línea tiene los mismos requisitos y se le solicitará la misma información que en la solicitud impresa. Visite [www.wilberclatonia.org](http://www.wilberclatonia.org) para comenzar u obtener información acerca del proceso de solicitud en línea. Comuníquese con **Connie Hasenohr, PO Box 487, Wilber, NE 68465; 402-821-2266; [connie.hasenohr@wilberclatonia.org](mailto:connie.hasenohr@wilberclatonia.org)** si tiene alguna pregunta acerca de la solicitud en línea.
6. LA SOLICITUD DE MI HIJO FUE APROBADA EL AÑO ANTERIOR. ¿DEBO COMPLETAR UNA NUEVA? Sí. La solicitud de su hijo solamente es válida para el pasado año escolar y para los primeros días de este año escolar. Debe enviar una nueva solicitud, excepto que la escuela le informe que su hijo es elegible para el nuevo año escolar. Si no envía una nueva solicitud aprobada por la escuela o si aún no ha recibido una notificación acerca de si su hijo es elegible para comidas gratuitas, su hijo deberá pagar el precio total de las comidas.
7. PARTICIPO EN EL PROGRAMA PARA MUJERES, BEBÉS Y NIÑOS (WOMEN, INFANTS AND CHILDREN, WIC). ¿MIS HIJOS PUEDEN RECIBIR COMIDAS GRATUITAS? Los niños que viven en hogares que participan en el programa WIC pueden ser elegibles para recibir comidas gratuitas o a un precio reducido. Envíe una solicitud.
8. ¿SE COMPROBARÁ LA INFORMACIÓN QUE ENVÍE? Sí. Es posible que también le solicitemos un comprobante escrito del ingreso familiar que informe.
9. SI NO CALIFICO AHORA, ¿PUEDO ENVIAR LA SOLICITUD MÁS ADELANTE? Sí, puede enviar la solicitud en cualquier momento del año escolar. Por ejemplo, los niños que tengan un padre, madre o tutor que quede desempleado pueden volverse elegibles para recibir comidas gratuitas y a un precio reducido si el ingreso familiar queda debajo del límite de ingresos.
10. ¿QUÉ SUCEDE SI NO ESTOY DE ACUERDO CON LA DECISIÓN DE LA ESCUELA CON RESPECTO A MI SOLICITUD? Debe hablar con los funcionarios escolares. También puede solicitar una audiencia llamando o escribiendo al siguiente contacto: **Ray Collins, PO Box 487, Wilber, NE 68465; 402-821-2266; [ray.collins@wilberclatonia.org](mailto:ray.collins@wilberclatonia.org)**
11. ¿PUEDO PRESENTAR UNA SOLICITUD SI ALGÚN INTEGRANTE DE MI FAMILIA NO ES CIUDADANO ESTADOUNIDENSE? Sí. No es necesario que usted, sus hijos u otros miembros de su familia sean ciudadanos estadounidenses para solicitar comidas gratuitas o a un precio reducido.
12. ¿QUÉ SUCEDE SI MI INGRESO NO SIEMPRE ES EL MISMO? Indique la cantidad que normalmente cobra. Por ejemplo, si normalmente cobra \$1000 por mes, pero el mes pasado perdió algunos trabajos y solo ganó \$900, indique que gana \$1000 por mes. Si normalmente recibe pago por horas extras, inclúyalo, pero no lo incluya si trabaja horas extras solo de vez en cuando. Si se quedó sin trabajo o le redujeron las horas o el salario, indique su ingreso actual.
13. ¿QUÉ SUCEDE SI ALGUNOS DE LOS MIEMBROS DE LA FAMILIA NO TIENEN INGRESOS PARA INFORMAR? Le solicitamos que en la solicitud informe si hay miembros de la familia que no reciben ciertos tipos de ingreso o que no reciben ningún ingreso. En este caso, escriba 0 en el campo. Sin embargo, si alguno de los campos de ingresos queda vacío o en blanco, esos también se considerarán ceros. Tenga cuidado cuando deje campos de ingresos en blanco, ya que asumiremos que fue su intención hacerlo.
14. PERTENECEMOS AL SERVICIO MILITAR, ¿INFORMAMOS NUESTROS INGRESOS DE MANERA DIFERENTE? El sueldo básico y las bonificaciones en efectivo deben informarse como ingresos. Si recibe alguna asignación en efectivo para vivienda fuera de la base, alimentos o vestimenta, también debe incluirlos como ingresos. Sin embargo, si su vivienda forma parte de la Iniciativa de Privatización de Viviendas para Militares, no incluya su asignación para vivienda como ingreso. Cualquier otro pago adicional por combate que resulte de un despliegue tampoco debe incluirse como ingreso.
15. ¿QUÉ SUCEDE SI NO HAY ESPACIO SUFICIENTE EN LA SOLICITUD PARA TODOS LOS INTEGRANTES DE MI FAMILIA? Incluya a los miembros adicionales de su familia en una hoja separada y adjúntela a su solicitud. Comuníquese con **Connie Hasenohr, PO Box 487, Wilber, NE 68465; 402-821-2266; [connie.hasenohr@wilberclatonia.org](mailto:connie.hasenohr@wilberclatonia.org)** para recibir una segunda solicitud.
16. MI FAMILIA NECESITA MÁS AYUDA. ¿HAY OTROS PROGRAMAS EN LOS QUE PODRÍAMOS INSCRIBIRNOS? Para obtener información acerca de cómo enviar una solicitud para el SNAP u otros beneficios de asistencia, ingrese a [ACCESSNebraska.ne.gov](http://ACCESSNebraska.ne.gov) o llame al 1-800-383-4278.

Si tiene otras preguntas o necesita ayuda, comuníquese al **402-821-2266**.

Atentamente,

**Connie Hasenohr**

**Instrucciones para completar la Solicitud familiar de comidas escolares gratuitas o a precio reducido**

**Si su familia recibe beneficios del Programa de Asistencia Nutricional Suplementaria (Supplemental Nutrition Assistance Program, SNAP), del Programa de Asistencia Temporal para Familias Necesitadas (Temporary Assistance for Needy Families, TANF) o del Programa de Distribución de Alimentos en Reservaciones Indígenas (Food Distribution Program on Indian Reservations, FDIPIR), siga las siguientes instrucciones:**

- Parte 1:** Indique el nombre de cada niño, la escuela a la que asiste y el grado en el que se encuentra.  
**Parte 2:** Indique el número de caso maestro (Master Case Number) en caso de que su familia califique para los programas SNAP, TANF o FDIPIR.  
**Parte 3:** Omítala esta parte.  
**Parte 4:** Complete esta parte. Un adulto debe firmar el formulario.  
**Parte 5:** Esta parte es opcional y no afecta la elegibilidad de su hijo para recibir comidas gratuitas o a precio reducido. Si no selecciona la raza o etnicidad, se puede seleccionar según la observación visual.

**En el caso de las familias con NIÑOS EN CUSTODIA, DESAMPARADOS, INMIGRANTES O FUGITIVOS siga las siguientes instrucciones:**

**Si todos los niños de la familia son niños en custodia:**

- Parte 1:** Indique el nombre de todos los niños en custodia, la escuela a la que asisten y el grado en el que se encuentran. Marque la casilla que indica que el niño es un niño en custodia.  
**Parte 2:** Omítala esta parte.  
**Parte 3:** Omítala esta parte.  
**Parte 4:** Complete esta parte. Un adulto debe firmar el formulario.  
**Parte 5:** Esta parte es opcional y no afecta la elegibilidad de su hijo para recibir comidas gratuitas o a precio reducido. Si no selecciona la raza o etnicidad, se puede seleccionar según la observación visual.

**Si algunos de los niños de la familia son niños en custodia o desamparados, inmigrantes o fugitivos:**

- Parte 1:** Indique el nombre de todos los niños, incluidos los niños en custodia, la escuela a la que asisten y el grado en el que se encuentran. Marque la casilla correspondiente si el niño es un niño en custodia.  
**Parte 2:** Si la familia no tiene un número de caso maestro (Master Case Number), omítala esta parte.  
**Parte 3:** Siga estas instrucciones para informar el ingreso familiar total del último mes.  
**Columna 1. Miembros de la familia:** escriba el nombre y apellido de cada persona que vive en su hogar, ya sea pariente o no (como abuelos, otros parientes, amigos), y con quienes comparte el ingreso y los gastos. Adjunte otra hoja si fuera necesario.  
**Columna 2. Ingresos brutos y frecuencia:** El ingreso bruto es lo que gana antes de los impuestos y demás deducciones; no es el sueldo neto. Por cada miembro de la familia, indique el tipo de ingreso recibido al mes. También debe informar la frecuencia con la cual se recibe el dinero: semanalmente, cada dos semanas, dos veces al mes, mensualmente.

**Las Ganancias de trabajo incluyen lo siguiente:**

- Salarios, sueldos y bonificaciones en efectivo
- Ingreso neto de actividad independiente (agrícola o comercial)

**Si usted pertenece al servicio militar de los Estados Unidos, incluya lo siguiente:**

- El sueldo básico y las bonificaciones en efectivo (no incluya los pagos por combate, los pagos de Asignación Suplementaria de Subsistencia Familiar [Family Subsistence Supplemental Allowance, FSSA] ni las asignaciones de privatización de viviendas)
- Asignaciones para vivienda fuera de la base, alimentos y vestimenta

**No incluya ingresos** del Programa de Asistencia Nutricional Suplementaria (Supplemental Nutrition Assistance Program, SNAP), del Programa de Distribución de Alimentos en Reservaciones Indígenas (Food Distribution Program on Indian Reservations, FDIPIR), del Programa para Mujeres, Bebés y Niños (Women, Infants and Children, WIC), los beneficios federales para la educación ni los pagos para cuidado de niños en custodia.

**Asistencia pública/Manutención de menores/Pensión alimenticia incluye lo siguiente:**

- Subsidios por desempleo, indemnización laboral
- Seguridad de ingreso suplementario (Supplemental Security Income, SSI), asistencia en efectivo del gobierno estatal o local
- Beneficios para veteranos, indemnización por huelga
- Manutención de menores, pensión alimentaria

**Pensiones/Jubilación/Todos los demás ingresos incluyen lo siguiente:**

- Pagos del Seguro Social (Incluida la jubilación ferroviaria y los beneficios por enfermedad de pulmón negro)
- Pensiones privadas o beneficios por discapacidad
- Ingresos regulares de fideicomisos o patrimonios, anualidades, ingreso por inversiones, intereses devengados, ingreso de rentas y *pagos* regulares en efectivo que recibe fuera de la familia.

Si no tiene ningún ingreso, escriba el número "0", o bien, deje el campo del ingreso en blanco. Si hace esto, usted certifica que no hay ningún ingreso que informar.

**Cantidad de integrantes de la familia:** Ingrese el número de integrantes de su familia.

**Número de Seguro Social:** El adulto que firme el formulario debe indicar los últimos cuatro dígitos de su Número de Seguro Social (Social Security Number, SSN) o marcar el casillero a la derecha denominado "Marcar si no tiene SSN".

**Parte 4:** Complete esta parte. Un adulto debe firmar el formulario.

**Parte 5:** Esta parte es opcional y no afecta la elegibilidad de su hijo para recibir comidas gratuitas o a precio reducido. Si no selecciona la raza o etnicidad, se puede seleccionar según la observación visual.

**NOTA:** Los niños que cumplen la definición de desamparados, inmigrantes o fugitivos, son elegibles para recibir comidas gratuitas. Sin embargo, el distrito escolar debe tener la documentación archivada de un coordinador de inmigrantes, un contacto con personas desamparados/fugitivos o la lista de Certificación Directa del distrito para aprobar al niño para recibir comidas gratuitas.

**TODAS las demás familias deben seguir las siguientes instrucciones:**

**Parte 1:** Indique el nombre de todos los niños, la escuela a la que asisten y el grado en el que se encuentran.

**Parte 2:** Si la familia no tiene un número de caso maestro (Master Case Number), omita esta parte.

**Parte 3:** Siga estas instrucciones para informar el ingreso familiar total del último mes.

**Columna 1. Miembros de la familia:** escriba el nombre y apellido de **cada** persona que vive en su hogar, ya sea pariente o no (como abuelos, otros parientes, amigos), y con quienes comparte el ingreso y los gastos. Adjunte otra hoja si fuera necesario.

**Columna 2. Ingresos brutos y frecuencia:** El ingreso bruto es lo que gana **antes de los impuestos y demás deducciones**; no es el sueldo neto. Por cada miembro de la familia, indique el tipo de ingreso recibido al mes. También debe informar la frecuencia con la cual se recibe el dinero: semanalmente, cada dos semanas, dos veces al mes, mensualmente.

**Las Ganancias de trabajo** incluyen lo siguiente:

- Salarios, sueldos y bonificaciones en efectivo
- Ingreso neto de actividad independiente (agrícola o comercial)

Si usted pertenece al servicio militar de los Estados Unidos, incluya lo siguiente:

- El sueldo básico y las bonificaciones en efectivo (no incluya los pagos por combate, los pagos de Asignación Suplementaria de Subsistencia Familiar [Family Subsistence Supplemental Allowance, FSSA] ni las asignaciones de privatización de viviendas)
- Asignaciones para vivienda fuera de la base, alimentos y vestimenta

**No incluya ingresos** del Programa de Asistencia Nutricional Suplementaria (Supplemental Nutrition Assistance Program, SNAP), del Programa de Distribución de Alimentos en Reservas Indígenas (Food Distribution Program on Indian Reservations, FDIPIR), del Programa para Mujeres, Bebés y Niños (Women, Infants and Children, WIC), los beneficios federales para la educación ni los pagos para cuidado de niños en custodia.

**Asistencia pública/Manutención de menores/Pensión alimenticia** incluye lo siguiente:

- Subsidios por desempleo, indemnización laboral
- Seguridad de ingreso suplementario (Supplemental Security Income, SSI), asistencia en efectivo del gobierno estatal o local
- Beneficios para veteranos, indemnización por huelga
- Manutención de menores, pensión alimentaria

**Pensiones/Jubilación/Todos los demás ingresos** incluyen lo siguiente:

- Pagos del Seguro Social (Incluida la jubilación ferroviaria y los beneficios por enfermedad de pulmón negro)
- Pensiones privadas o beneficios por discapacidad
- Ingresos regulares de fideicomisos o patrimonios, anualidades, ingreso por inversiones, intereses devengados, ingreso de rentas y *pagos* regulares en efectivo que recibe fuera de la familia.

Si no tiene ningún ingreso, escriba el número "0", o bien, deje el campo del ingreso en blanco. Si hace esto, usted certifica que no hay ningún ingreso que informar.

**Cantidad de integrantes de la familia:** Ingrese el número de integrantes de su familia.

**Número de Seguro Social:** El adulto que firme el formulario debe indicar los últimos cuatro dígitos de su Número de Seguro Social (Social Security Number, SSN) o marcar el casillero a la derecha denominado "Marcar si no tiene SSN".

Return Completed Application to:

(Insert School Name & Mailing Address here)

**Part 1: Children in School**

List names of all children in school (First, Middle Initial, Last).  
If all children listed are foster, skip to Part 4 to sign the form.  
If some of the children are foster or are homeless, migrant or runaway children, complete all steps of the application.

Grade

Name of School Child Attends

Check all that apply:  
Foster Child  Homeless, Migrant, Runaway

**Part 2: Assistance Programs – SNAP, TANF or FDPIR Benefits**

Enter **MASTER CASE NUMBER** if household qualifies for SNAP, TANF or FDPIR:  
(Social Security numbers, Medicaid numbers and EBT numbers are not accepted.) Skip to Part 4

**Part 3: Total Household Gross Income – You must tell us how much and how often.**

**1. Household Members**

List **everyone** in the household, current income each person earns in **whole dollars** (no cents) & how often. Entering "0" or leaving the income field blank certifies no income to report. A foster child's **personal** use income must be listed.

**2. Gross Income (before taxes) and How Often it was Received**

Earnings from Work before deductions

Public Assistance, Child Support, Alimony

Pensions, Retirement and All Other Income

Income

How often

Income

How often

Income

How often

Total Number of Household Members: (Children and Adults)

Last four digits of Social Security Number (SSN) of the adult signing this form: XXX – XXX –

Check if no SSN

**Part 4: Adult Signature and Contact Information – An adult household member must sign the application.**

"I certify (promise) that all information on this application is true and that all income is reported. I understand that this information is given in connection with the receipt of Federal funds and that school officials may verify (check) the information. I am aware that if I purposely give false information, my children may lose meal benefits and I may be prosecuted under applicable State and Federal laws."

Sign here:

Print name:

Date:

Street Address (if available):

Zip:

Daytime Phone:

**Part 5: Children's Ethnic and Racial Identities – Optional**

Check one Ethnic Identity:

– and –

Check one or more Racial Identities:

Hispanic or Latino

Asian

Black or African American

Native Hawaiian or other Pacific Islander

Not Hispanic or Latino

White

American Indian or Alaskan Native

**Do Not Fill Out the Section Below - For School Use Only**

Annual Income Conversion:

Weekly X 52;

Every 2 weeks X 26;

Twice a month X 24;

Monthly X 12

Total Household Size: \_\_\_\_\_

Total Income: \_\_\_\_\_ per

Year  Month  2 X Mo  Every 2 Wks  Week

Free

Reduced

Denied

Income

Reason for denial:

Categorically eligible:

Income too high

SNAP/TANF/FDPIR

Incomplete application

Foster Child

Homeless/Migrant/Runaway:

(Official Documentation Required at School)

Signature of Determining Official:

Date Approved:

**FOR THE VERIFICATION PROCESS ONLY:**

Signature of Confirming Official:

Date Confirmed:

Date Withdrawn From School:

Signature of Verifying Official:

Date Verified:



Your children may qualify for free or reduced price meals if your household income falls at or below the limits on this chart.

FEDERAL INCOME CHART for School Year 2023-24					
Household size	Yearly	Monthly	Twice per Month	Every Two Weeks	Weekly
1	26,973	2,248	1,124	1,038	519
2	36,482	3,041	1,521	1,404	702
3	45,991	3,833	1,917	1,769	885
4	55,500	4,625	2,313	2,135	1,068
5	65,009	5,418	2,709	2,501	1,251
6	74,518	6,210	3,105	2,867	1,434
7	84,027	7,003	3,502	3,232	1,616
8	93,536	7,795	3,898	3,598	1,799
Each additional person:	9,509	793	397	366	183

The **Richard B. Russell National School Lunch Act** requires the information on this application. You do not have to give the information, but if you do not, we cannot approve your child for free or reduced price meals. You must include the last four digits of the social security number of the adult household member who signs the application. The last four digits of the social security number are not required when you apply on behalf of a foster child or you list a Supplemental Nutrition Assistance Program (SNAP), Temporary Assistance for Needy Families (TANF) Program or Food Distribution Program on Indian Reservations (FDPIR) case number or other FDPIR identifier for your child or when you indicate that the adult household member signing the application does not have a social security number. We will use your information to determine if your child is eligible for free or reduced price meals and for administration and enforcement of the lunch and breakfast programs. We may share your eligibility information with education, health and nutrition programs to help them evaluate, fund or determine benefits for their programs, auditors for program reviews and law enforcement officials to help them look into violations of program rules.

**Non-Discrimination Statement:** This explains what to do if you believe you have been treated unfairly.

In accordance with federal civil rights law and U.S. Department of Agriculture (USDA) civil rights regulations and policies, this institution is prohibited from discriminating on the basis of race, color, national origin, sex (including gender identity and sexual orientation), disability, age, or reprisal or retaliation for prior civil rights activity.

Program information may be made available in languages other than English. Persons with disabilities who require alternative means of communication to obtain program information (e.g., Braille, large print, audiotape, American Sign Language), should contact the responsible state or local agency that administers the program or USDA's TARGET Center at (202) 720-2600 (voice and TTY) or contact USDA through the Federal Relay Service at (800) 877-8339.

To file a program discrimination complaint, a Complainant should complete a Form AD-3027, USDA Program Discrimination Complaint Form which can be obtained online at: <https://www.usda.gov/sites/default/files/documents/USDA-OASCR%20P-Complaint-Form-0508-0002-508-11-28-17Fax2Mail.pdf>, from any USDA office, by calling (866) 632-9992, or by writing a letter addressed to USDA. The letter must contain the complainant's name, address, telephone number, and a written description of the alleged discriminatory action in sufficient detail to inform the Assistant Secretary for Civil Rights (ASCR) about the nature and date of an alleged civil rights violation. The completed AD-3027 form or letter must be submitted to USDA by:

(1) Mail: U.S. Department of Agriculture  
Office of the Assistant Secretary for Civil Rights  
1400 Independence Avenue, SW  
Washington, D.C. 20250-9410

(2) Fax: (833) 256-1665 or (202) 690-7442; or

(3) Email: [program.intake@usda.gov](mailto:program.intake@usda.gov)

This institution is an equal opportunity provider.

Es posible que sus hijos califiquen para recibir comidas gratuitas o a un precio reducido si su ingreso familiar se encuentra en el límite o debajo de los límites que se detallan en dicho cuadro.

CUADRO DE INGRESO FEDERAL para el año escolar 2023-24					
Cantidad de integrantes de la familia	Anual	Mensual	Dos veces por mes	Cada dos semanas	Semanal
1	26,973	2,248	1,124	1,038	519
2	36,482	3,041	1,521	1,404	702
3	45,991	3,833	1,917	1,769	885
4	55,500	4,625	2,313	2,135	1,068
5	65,009	5,418	2,709	2,501	1,251
6	74,518	6,210	3,105	2,867	1,434
7	84,027	7,003	3,502	3,232	1,616
8	93,536	7,795	3,898	3,598	1,799
Cada persona adicional:	9,509	793	397	366	183

La **Ley Nacional de Almuerzo Escolar Richard B. Russell** exige la información que aparece en esta solicitud. No tiene que brindar la información, pero si no lo hace, no podemos autorizar que su hijo reciba comidas gratuitas o a un precio reducido. Debe incluir los últimos cuatro dígitos del número de Seguro Social del miembro adulto del hogar que firma la solicitud. Los últimos cuatro dígitos del número de Seguro Social no son necesarios si usted envía la solicitud en nombre de un niño en custodia, si indica el número de caso del Programa de Asistencia Nutricional Suplementaria (Supplemental Nutrition Assistance Program, SNAP), el Programa de Asistencia Temporal para Familias Necesitadas (Temporary Assistance for Needy Families, TANF) o el Programa de Distribución de Alimentos en Reservaciones Indígenas (Food Distribution Program on Indian Reservations, FDIPIR) u otro identificador del FDIPIR para su hijo, o si indica que el miembro adulto del hogar que firma la solicitud no tiene número de Seguro Social. Utilizaremos su información para determinar si su hijo es elegible para recibir comidas gratuitas o a un precio reducido, así como para la administración y el cumplimiento de los programas de almuerzo y desayuno. ES POSIBLE que compartamos su información de elegibilidad con programas de educación, salud y nutrición para ayudarlos a evaluar, financiar y determinar los beneficios de sus programas, con auditores para las revisiones del programa, y con personal de fuerzas de seguridad para ayudarles a investigar infracciones en los reglamentos del programa.

#### Declaración de no discriminación

De acuerdo con las leyes federales de derechos civiles y las normas y disposiciones de derechos civiles del Departamento de Agricultura de los Estados Unidos (USDA, por su sigla en inglés), se prohíbe a esta institución discriminar a causa de raza, color de piel, nacionalidad, sexo (lo que incluye identidad de género y orientación sexual), discapacidad, edad o como represalia por actividades previas relacionadas con los derechos civiles.

Es posible que la información sobre programas esté disponible en otros idiomas, además del inglés. Las personas con discapacidades que necesiten medios alternativos de comunicación para recibir información sobre el programa (p. ej.: sistema braille, letra grande, cinta de audio, lenguaje de señas estadounidense) deben comunicarse con el organismo estatal o local responsable que administre el programa o el Centro TARGET del USDA al 202-720-2600 (voz y TTY) o comunicarse con el USDA a través del Servicio Federal de Trasmisión al 800-877-8339.

Para presentar una queja por discriminación en relación con el programa, el denunciante debe completar un formulario AD-3027, formulario de quejas por discriminación del programa del USDA, que puede obtenerse en línea, de cualquier oficina del USDA, llamando al 866-632-9992 o escribiendo una carta dirigida al USDA. La carta debe contener el nombre del denunciante, su dirección, número de teléfono y una descripción escrita de la supuesta acción discriminatoria con suficiente detalle para informar al Subsecretario de Derechos Civiles (ASCR, por su sigla en inglés) sobre la naturaleza y la fecha de la supuesta violación de los derechos civiles. El formulario AD-3027 completo o la carta deben entregarse al USDA por:

1. correo postal: US. Department of Agriculture Office of the Assistant Secretary for Civil Rights, 1400 Independence Avenue, SW, Washington, D.C. 20250-9410; o
2. fax: (833) 256-1665 o (202) 690-7442; o
3. correo electrónico: [program.intake@usda.gov](mailto:program.intake@usda.gov).

Esta institución es un proveedor que brinda igualdad de oportunidades.

## Computing Income for Self-Employed Individuals

Individuals who are self-employed or engaged in farming may experience variations in cash flow and cannot easily report a monthly income. These individuals can use their 2020 U.S. Individual Income Tax Return Form 1040 to report self-employment income for the free and reduced-price meal application. The income to report is income derived from the business venture less operating costs incurred in the generation of that income. Deductions for personal expenses such as interest on home mortgages, medical expenses and other similar non-business items are not allowed in reducing gross business income.

When completing this form, **losses** (negative numbers) reported on any of the lines below are included when determining the **total** self-employed income. If the total income is a negative number, it is to be recorded as zero on the meal application in the column labeled "All Other Income".

Zero income resulting from use of the 1040 Form does not require follow-up.

### **Important Reminders from the U.S. Individual Income Tax Return Form 1040:**

Line 1 cannot be used to report current income. Income from wages or salaries must be reported on the application for the most recent month.

Line 9 (Total Income) and line 11 (Adjusted Gross Income) cannot be used for the purpose of applying for free and reduced-price meals.

The five line items listed below are used to determine allowable self-employment income.

### **From the first page of the U.S. Individual Income Tax Return Form 1040:**

Line 7 Capital Gain or (loss) \_\_\_\_\_

### **From the U.S. Individual Income Tax Return Form 1040 – SCHEDULE 1 - under Part 1 - Additional Income:**

Line 3 Business Income or (loss) \_\_\_\_\_

Line 4 Other Gains or (losses) \_\_\_\_\_

Line 5 Rental Real Estate, etc. \_\_\_\_\_

Line 6 Farm Income or (loss) \_\_\_\_\_

**Total** of the above five lines: \_\_\_\_\_ **equals annual self-employed income \***

\* Report this figure on the meal application in the column labeled "All Other Income".

**If the total of the above lines is a negative number, it must be changed to zero before it is transferred to the meal application.**

**NOTE:** This form is used only to report income from self-employment and/or farming. If any members of the household have income from other jobs, the gross income from those jobs must be reported on the meal application form.

## Cálculo de Ingresos de Personas Autoempleadas

Anexo E: 2023-24

Las personas autoempleadas o que se dedican a la agricultura pueden experimentar variaciones en el flujo de efectivo y no pueden informar fácilmente un ingreso mensual. Estas personas pueden usar su ANEXO 1 del Formulario 1040 - Declaración del impuesto federal sobre el ingreso personal en los Estados Unidos de 2020 para informar ingresos por autoempleo para la solicitud de comidas gratuitas o a precio reducido. El ingreso que debe informarse es el ingreso derivado de la empresa comercial menos los costos operativos incurridos en la generación de ese ingreso. No se permiten deducciones por gastos personales, tales como intereses sobre hipotecas de vivienda, gastos médicos y otros artículos no comerciales similares para reducir los ingresos brutos del negocio.

Al completar este formulario, las **pérdidas** (números negativos) informadas en cualquiera de las líneas a continuación se incluyen al determinar el ingreso total por autoempleo. Si el ingreso total es un número negativo, se registrará como cero en la solicitud de comidas en la categoría etiquetada como "Todos los Demás Ingresos".

El ingreso cero resultante del uso del Formulario 1040 no requiere seguimiento.

### **Recordatorios Importantes del Formulario 1040 - Declaración del impuesto federal sobre el ingreso personal en los Estados Unidos:**

La línea 1 no se puede utilizar para informar los ingresos actuales. Los ingresos por sueldos o salarios deben informarse en la solicitud del mes más reciente.

La línea 9 (Ingresos totales) y la línea 11 (Ingresos brutos ajustados) no se pueden utilizar para solicitar comidas gratuitas o a precio reducido.

Los cinco elementos de las líneas a continuación se utilizan para determinar el ingreso permisible por autoempleo.

### **De la primera página del Formulario 1040 - Declaración del impuesto federal sobre el ingreso personal en los Estados Unidos:**

Línea 7, Ganancia (o pérdida) de capital \_\_\_\_\_

### **Del ANEXO 1 del Formulario 1040 - Declaración del impuesto federal sobre el ingreso personal en los Estados Unidos - debajo de la Parte 1 - Ingresos Adicionales:**

Línea 3, Ingresos (o pérdidas) del Negocio \_\_\_\_\_

Línea 4, Otras ganancias (o pérdidas) \_\_\_\_\_

Línea 5, Bienes Inmuebles de Alquiler, etc. \_\_\_\_\_

Línea 6, Ingresos (o pérdidas) por actividades agrícolas \_\_\_\_\_

**Suma total** de las cinco líneas anteriores: \_\_\_\_\_

**igual al ingreso anual por autoempleo\***

\* Informe este monto en la solicitud de comidas en la categoría etiquetada como "Todos los Demás Ingresos".

**Si el total de las líneas anteriores es un número negativo, debe cambiarse a cero antes de transferirlo a la solicitud de comidas.**

**NOTA:** Este formulario se utiliza únicamente para informar de los ingresos procedentes del autoempleo y/o de la agricultura. Si algún miembro de la familia tiene ingresos de otros trabajos, los ingresos brutos de esos trabajos deben ser reportados en la solicitud de comidas.

### Sharing Information with Other Programs - Optional

Dear Parent/Guardian:

To save you time and effort, the information you gave on your Free and Reduced-Price School Meals Application may be shared with other programs for which your children may qualify.

**For the following programs, we must have your permission to share your information. Sending in this form will not change whether your children get free or reduced price meals.**

- Yes! I **DO** want school officials to share information from my Free and Reduced Price School Meals Application with **Wilber Clatonia Backpack Program**
- Yes! I **DO** want school officials to share information from my Free and Reduced Price School Meals Application with **Student Services**.
- Yes! I **DO** want school officials to share information from my Free and Reduced Price School Meals Application with **Administration**.

**If you checked "yes" to any or all of the boxes above, complete the following form to ensure that your information is shared for the child(ren) listed below. Your information will be shared only with the programs you checked.**

Child's Name: \_\_\_\_\_ School: \_\_\_\_\_

Child's Name: \_\_\_\_\_ School: \_\_\_\_\_

Child's Name: \_\_\_\_\_ School: \_\_\_\_\_

Child's Name: \_\_\_\_\_ School: \_\_\_\_\_

Signature of Parent/Guardian: \_\_\_\_\_ Date: \_\_\_\_\_

Printed Name: \_\_\_\_\_

Address: \_\_\_\_\_

For more information, you may call **Connie Hasenohr** at **402-821-2266 ext 302** or email at **connie.hasenohr@wilberclatonia.org**  
Return this form to: **Wilber Clatonia Public Schools, Attn: Connie Hasenohr, PO Box 487, Wilber, NE 68465**

BACK TO SCHOOL



# AUGUST

© Kim Miller

MONDAY

TUESDAY

WEDNESDAY

THURSDAY

FRIDAY

Breakfast  
Choice of  
Cereal or Item  
on Menu each  
day

1

2

3

4

Prices  
Breakfast  
K-12 \$2.00  
Adults \$2.50  
Lunch  
K-5 \$3.05  
6-12 \$3.25  
Adults \$4.00

7

"This institution is  
an equal  
opportunity  
provider"

8

9

Menus  
subject to  
change at  
anytime

10

11

14

15 Bagel  
\*\*\*\*\*

Corndog  
Seasoned  
Noodles  
Baked Beans  
Fruit  
Milk

16 Pancakes  
\*\*\*\*\*

Sub Sandwich  
Chips  
Carrots  
Fruit  
Milk

17 Breakfast Pizza  
\*\*\*\*\*

Eggs & Biscuit  
Oven Potatoes  
Vegetable Cup  
Fruit  
Milk

18 Breakfast  
Sandwich  
\*\*\*\*\*

Lasagna Rollup  
Garlic Bread  
Corn  
Fruit  
Milk

21 Waffles  
\*\*\*\*\*

Chicken Sandwich  
Oven Potatoes  
Baked Beans  
Fruit  
Milk

22 Breakfast Taco  
\*\*\*\*\*

Taco  
Mexican Rice  
Corn/Black Beans  
Fruit  
Milk

23 Donut  
\*\*\*\*\*

Italian Dunkers  
Toss Salad  
Pudding  
Fruit  
Milk

24 Biscuit & Gravy  
\*\*\*\*\*

Hamburger  
Oven Potatoes  
Coleslaw  
Fruit  
Milk

25 Eggs & Toast  
\*\*\*\*\*

Chicken Alfredo  
Garlic Bread  
Peas  
Fruit  
Milk

28 Pancake on  
Stick  
\*\*\*\*\*

Chicken Nuggets  
Rice Pilaf  
Broccoli  
Fruit  
Milk

29 Breakfast  
Burrito  
\*\*\*\*\*

Quesadilla  
Mexican Rice  
Salsa  
Fruit  
Milk

30 French Toast  
\*\*\*\*\*

Hotdog  
Oven Potatoes  
Baked Beans  
Fruit  
Milk

31 Ham/Egg/Cheese  
Bar  
\*\*\*\*\*

Smokies  
Mac & Cheese  
Mini Bread Loaf  
Peas  
Fruit  
Milk

Any Questions  
please contact

Janet Slama  
janet.slama@wilberclatonia.org

BACK TO SCHOOL



# AGOSTO

© Kim Miller

LUNES

MARTES

MIÉRCOLES

JUEVES

VIERNES

<p>Desayuno Choice of Cereal or Item on Menu each day</p>	<p>1</p>	<p>2</p>	<p>3</p>	<p>4  Comida Desayuno K-12 \$2.00 Adults \$2.50 Leche \$0.50 Almuerzo K-5 \$3.05 6-12 \$3.25 Adults \$4.00 Leche \$0.50</p>
<p>7  "Esta institución es un proveedor de igualdad de oportunidades"</p>	<p>8</p>	<p>9  El menú está sujeto a cambios en cualquier momento.</p>	<p>10</p>	<p>11</p>
<p>14</p>	<p>15 el Beigel ***** Corndog fideos sazonados frijoles cocidos Fruta Leche</p>	<p>16 Panqueques ***** Sandwich Sub Chips la zanahoria Fruta Leche</p>	<p>17 desayuno Pizza ***** Huevos y la galleta papas al horno copa vegetal Fruta Leche</p>	<p>18 desayuno Sandwich ***** Lasana ajo pan maiz Fruta Leche</p>
<p>21 Gofres ***** Sandwich pollo papas al horno frijoles cocidos Fruta Leche</p>	<p>22 desayuno Taco ***** Taco arroz ala mexicana maiz/frijoles negros Fruta Leche</p>	<p>23 Donut ***** pedazo de pan ensalada Pudin Fruta Leche</p>	<p>24 la galleta y el caldo ***** la hamburguesa papas al horno Ensalada de col Fruta Leche</p>	<p>25 Huevo y tostada ***** pollo Alfredo ajo pan el guisante Fruta Leche</p>
<p>28 panqueque en el palillo ***** Nuggets de pollo pilaf de arroz brócoli Fruta Leche</p>	<p>29 desayuno Burrito ***** Quesadilla arroz ala mexicana Salsa Fruta Leche</p>	<p>30 pan frances ***** Hot dog papas al horno frijoles cocidos Fruta Leche</p>	<p>31 jamón/huevo/bar queso ***** ahumados mac arrones con queso mini pan de molde el gusante Fruta/Leche</p>	<p>Cualquier pregunta por favor póngase en contacto  Janet Slama janet.slama@wilberclatonia.org</p>

# August

# 2023

Sunday	Monday	Tuesday	Wednesday	Thursday	Friday	Saturday
		1 7 pm Fall Sports Parent Mtg	2 1 pm Sports Concussion Testing	3	4 6:30 pm 6 <sup>th</sup> Grade Band @ Children's Parade	5 12:30 pm 7-12 Band @ Post Office
6 12:30 pm 7-12 Band Czech Days @ Post Office	7 PTO Swimming Party	8	9 New Staff Orientation	10 Teacher Inservice/Workday 6:30 pm Kindergarten Parent Mtg 7:30 pm EL Parent Meeting	11 Teacher Inservice/Workday	12
13 7 pm Booster Club Mtg	14 Teacher Inservice/Workday 6:15 pm Title 1 Parent Mtg 6:30 pm Open House PK-12	15 First Day of School 1 pm Dismissal 6:30 pm Preschool Parent Mtg	16 1 pm Dismissal	17 8:45 am Bus Evacuation Drill 6 pm V SB @ Raymond Central	18 5 pm V VB @ Fairbury	19 8:30 am V SB Quad @ Milford
20	21 First Day for Preschool 3:35 pm One Act Tryouts 6:30 pm 9-12 Band/choir retreat @ Legion 7 pm Board Bd mtg	22 4:30 pm V SB Home vs Auburn	23 5:30 pm Fall Sports Cookout @ Legion	24 6 pm V VB Quad @ Palmyra	25 7 pm V FB-Home vs Hastings	26 9 am V SB @ Holdrege
27	28 6 pm JV FB Home vs Raymond Central 6 pm V SB @ St Paul 6:30 pm FFA Chapter Mtg 7 pm Friends of Music Mtg	29	30	31		

# **Be the Best Person You Can Be**

## **PRIDE:**

### **Positive Responsible Individuals Dedicated to Excellence**

Wilber Clatonia Public Schools

PO Box 487

900 S Franklin St

Wilber, NE 68465

402-821-2141 Elementary

402-821-2508 High School

402-821-2266 Superintendent's Office

402-821-3013 Fax

[www.wilberclatonia.org](http://www.wilberclatonia.org)